

# Gunn Large Fixed

## Product Description

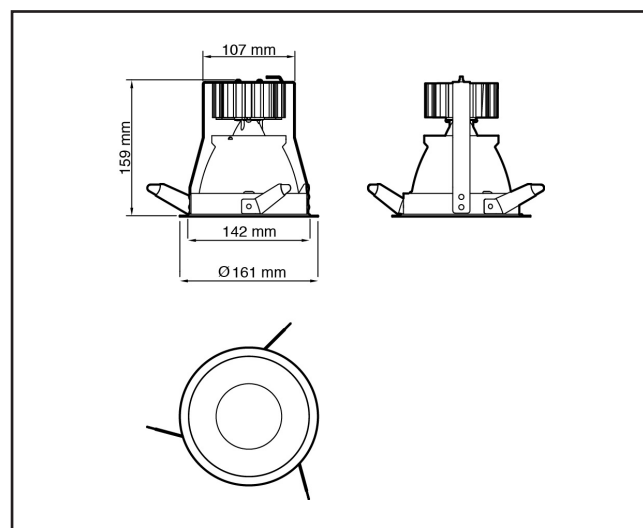
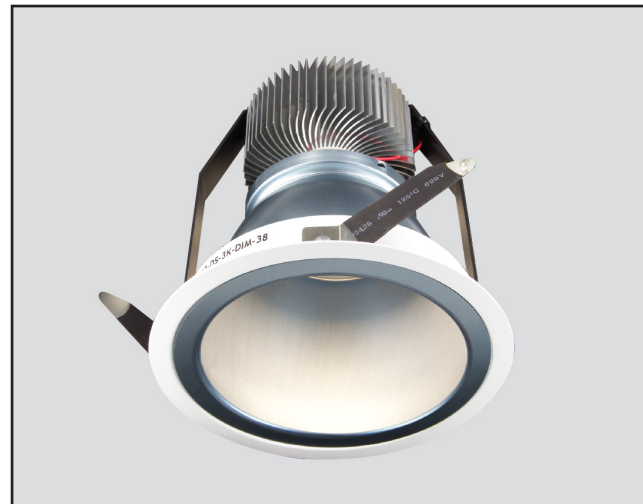
Professional LED fixed downlight with dual reflector system to provide smooth glare-free output. Available in 21W and 35W versions. Multi-chip technology means constant colour temperature. Assembled in Australia from corrosion resistant componentry. Easily customised.

## Product Details

Application	General Illumination
Trim Colours	White, Black, Silver, Custom
Reflector Finishes	White, Black, Dark Satin, Rose Champagne, Gold, Ice Blue
Materials	Anodised aluminium reflector and heatsink. 304 stainless steel fascia

## Technical Data

Input Power	500mA (21W) or 900mA (35W) driver c/w flex and plug
Power Consumption	21W or 35W
Lumen Output	
(21W) 2700K	1200 lm
(21W) 3000K	1363 lm
(21W) 4000K	1500 lm
(35W) 2700K	2250 lm
(35W) 3000K	2500 lm
(35W) 4000K	2750 lm
Lumen Maintenance	70% at 50 000 hrs
Dimming	- TR Leading/Trailing Edge (Standard) - DD Dali Dim - DC 1-10V DC Control
Cut Out	145 mm



## Order Information

Specify fitting options as per example below to order.

Example: **GLF - 21W - 2 - 15R - 27K - NB - TR**

Fitting	Watts	Colour	Reflector	CCT	Beam	Dimming
<b>GLF</b>						

GLF	21W	2	Standard	Special	27K	NB	TR
Gunn Large Fixed	21 Watts	Black	3R	16R	2700K	Narrow Beam	Leading/Trailing
	35W	3 White	White	Rose	3K	Medium Beam (26°)	Dali Dim
	35 Watts	6 Silver	2R	15R	3000K	Wide Beam (39°)	DC
		5 Custom	Black	Gold	4K		1-10V DC Control
			10R	Ice Blue	4000K		
			18R				
			Champagne				

### Standard Reflector Colours

White

Black

Dark Satin

Champagne



### Special Reflector Colours

Rose

Gold

Ice Blue



Reflectors are shown illuminated.